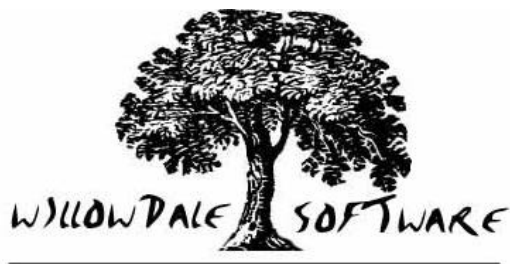


Projector|Pilot

FOR

EPSON PROJECTORS

User Manual



Copyright ©1999 by Willowdale Software Systems Inc. All rights reserved. No part of this publication may be reproduced, stored in a retrieval system, or transmitted, in any form or by any means, electronic, mechanical, photocopying, recording, or otherwise, without the prior written permission of Willowdale Software Systems Inc.

TABLE OF CONTENTS

INTRODUCTION.....	1
Welcome to Projector Pilot	1
System Requirements.....	1
License and Warranty	2
INSTALLING PROJECTOR PILOT SOFTWARE.....	3
Before Installing This Release.....	3
Extracting the Program Files	3
Installing Projector Pilot on your Palm.....	3
CONNECTING YOUR PALM TO THE PROJECTOR	6
STARTING PROJECTOR PILOT.....	8
REGISTERING PROJECTOR PILOT.....	9
POWER SCREEN	10
SOURCE SCREEN.....	11
AUDIO SCREEN	12
MISCELLANEOUS SCREEN	14
TROUBLESHOOTING.....	15
The Projector is not Responding or Reporting Disconnected	15
TECHNICAL SUPPORT	16

INTRODUCTION

Welcome to Projector Pilot

Congratulations on your purchase of Projector Pilot, the world's first software program enabling your Palm Connected Organizer to control your Epson LCD/Video projector.

Prior to the release of this program, projector control systems have cost thousands of dollars and had to be individually programmed by experienced and highly skilled personnel. The low cost Palm platform has opened up the market to users who previously could not afford these high-end systems but still wanted a better control interface than the infrared remote control.

Projector Pilot provides you with an interface to control all aspects of your projector's operation including power on and off, source changes, audio adjustments as well as toggling of ceiling and rear screen modes. The Palm has a backlit screen for use in low light conditions and its small size makes it ideal for use on podiums.

Applications for Projector Pilot include:

- Ceiling-mount room installations
- Staging events
- Wired remote applications where there is no line of sight for the infrared remote control
- Rear screen operation.

This user manual gives you complete step by step procedures for installing the software, connecting the projector to your Palm and running the program. It also includes detailed pictures of the connections and screen shots of the running program.

System Requirements

Projector Pilot will work on any version of the Palm OS. You will need 25K of free memory to install the program.

This manual makes the assumption that you are familiar with the Palm Connected Organizer. Before installing the Projector Pilot software, we recommend that you read the Palm user manual in order to familiarize yourself with its operation. You will need to know how to write numbers on the screen in order to input your serial number to register the software. You will also need the Pilot program loaded on your desktop computer in order to install third party applications with the install tool.

Connecting the Palm to an Epson projector through the RS-232 port is easy. However, some installations may have unique cabling needs in order for the Palm to be connected to the projector. It may be necessary to purchase serial cable extensions in order to span longer distances than the combined length of the hotsync and Epson main cables.

Extremely long distances may also require a serial amplifier to boost the signal to ensure proper performance. If you need further assistance in this area, please contact your local projector dealer familiar with systems installs.

License and Warranty

The license agreement and warranty for Projector Pilot are provided with the software, in an ASCII text file called EULA.TXT. Please read the contents of this file before installing the program.

INSTALLING PROJECTOR PILOT SOFTWARE

Before Installing This Release

If you already have a previous version of Projector Pilot on your Palm, you do not need to uninstall that version before installing a new version. However, you may need to stop a running copy of Projector Pilot. To do that, switch to another application, such as the calculator.

You must have at least 25K of available memory on your Palm device before installing Projector Pilot.

Once you have downloaded the ZIP file to your desktop, you are ready to install Projector Pilot.

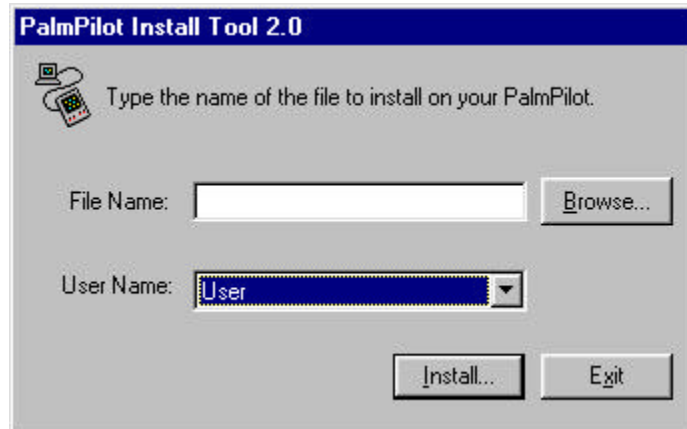
Extracting the Program Files

The Projector Pilot program must be decompressed before it can be loaded on your PalmPilot. To do so you must have a decompression utility. Popular utilities include StuffIt Expander (Windows and Mac, <http://www.aladdinsys.com/expander/index.html>), ZipMagic (Windows only, <ftp://ftp.mijenix.com/pub/zm95-10.exe>) or WinZip (Windows, <http://www.winzip.com>). Read the directions on how to install and use these programs

Once a decompression utility is installed, decompress the ProjPile.zip file. Make sure you keep track of the directory to which you decompressed the files. We recommend that you place Projector Pilot files in the Pilot Add-On folder that is a subdirectory of your Pilot folder. In most configurations this will be located at c:\pilot\add-on. After extraction you will have a copy of the Projector Pilot program itself (ProjPile.prc), this manual in Adobe Acrobat (PDF) format (PPMAN.pdf) and an end-user license agreement (EULA.txt). You now use the Install tool that comes with your Palm OS device to install Projector Pilot.

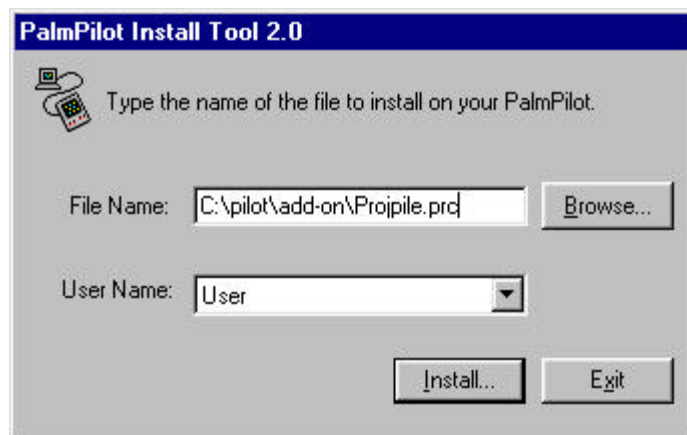
Installing Projector Pilot on your Palm

1. Open the PalmPilot Install Tool:

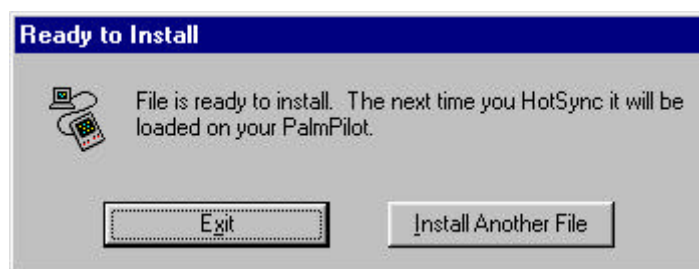


2. In the PalmPilot Install Tool dialog, choose the user name in the drop-down list that corresponds to your PalmPilot. (There may not necessarily be more than one user name.)
3. Click the Browse button to locate the projpile.prc file that you just extracted. By default, the projpile.prc is located in your C:\pilot\add-on directory.

Note: Palm III users won't see the following dialog. Click Add instead of Install, and Done instead of exit.



4. Click Install in the PalmPilot Install Tool dialog. The Ready to Install dialog appears:



5. Click Exit. The PalmPilot Install Tool dialog will close.
6. Perform a HotSync operation. Projector Pilot will be installed automatically and added to your Palms applications list.

Note: If RAM memory is lost due to a "Reset" operation, or by loss of battery power, it will be necessary to re-install Projector Pilot.

CONNECTING YOUR PALM TO THE PROJECTOR

In order to control the projector from your Palm, you must hook up the hotsync cradle to the serial port on the back of the projector. The serial port of an Epson projector is on the main mouse/com cable that plugs into the back of the projector. The end that plugs into the projector goes into the mouse/com 1 port. (See Figure 1)



Figure 1

The other end of the main cable has ports for PC Serial, Macintosh Serial and PS/2 Mouse. (See Figure 2)



Figure 2

Plug the 9-pin serial connection at the end of the hotsync cable into the 9-pin PC serial port at the end of the main cable. (See Figure 3)



Figure 3

You are now ready to operate your projector using the Palm and the Projector Pilot program. To run the program and communicate the commands to the projector, you must have the Palm running while sitting in the hotsync cradle. (See Figure 4) Note: The total cable length with the combined serial cables is only 13 feet. In most boardroom applications where the projector is mounted in the ceiling or in staging events where the projector is used in a rear screen mode, you will require a serial cable longer than 13 feet. You will need to extend the serial cable with a male to female extension cable. If you need an extremely long cable to reach the projector, you may have to purchase a serial amplifier to boost the serial data over long distances.



Figure 4

STARTING PROJECTOR PILOT

1. By tapping the applications button, the applications picker screen becomes visible:

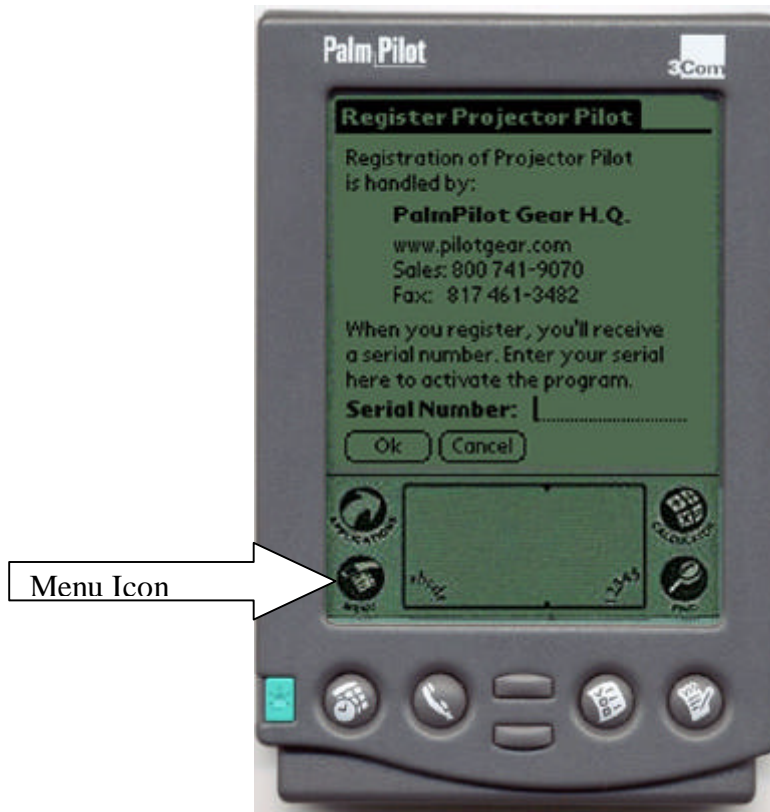


2. Tapping the Epson projector button in the Application picker screen starts the program:



REGISTERING PROJECTOR PILOT

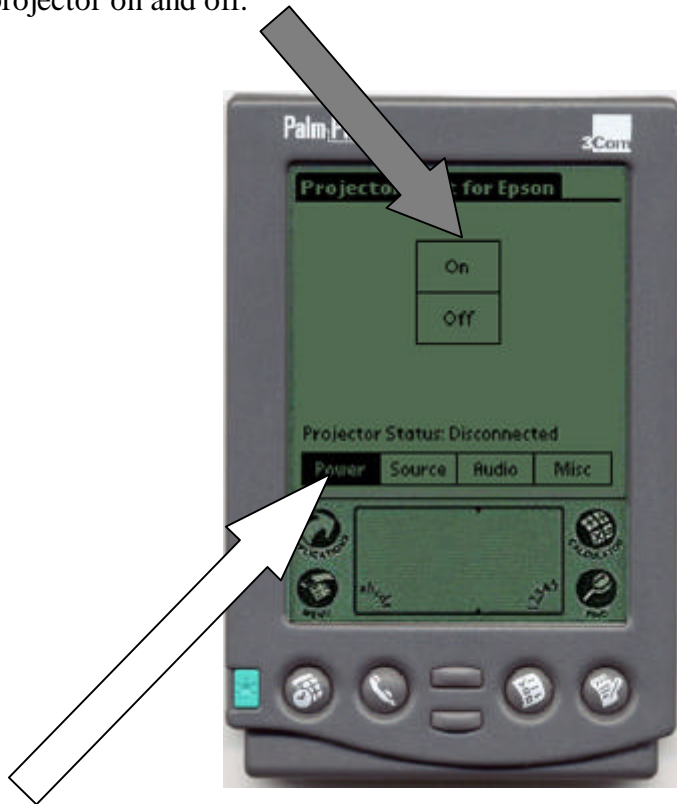
When you start Projector Pilot for the first time you will get a warning that it is unregistered. Tap on the menu icon to reveal the options pull-down menu. Select Register from this menu and you will see the screen below:



Write in your registration serial number on the number drawing area and then tap OK to enable the software.

POWER SCREEN

The first screen you will see when starting the program is the power screen. Tap here to turn the projector on and off:



Click here to change to the other screens: Source, Audio and Miscellaneous.

The projector status line will tell you if the projector is warming up or cooling down. It will also tell you if the Palm is disconnected from the hotsync cradle or if there is no connection with the projector. Note: You can run the program in the disconnected mode, however, it will run slower than normal as it is waiting for the projector's return communication. The program does not have to be restarted once it is disconnected, simply replace the Palm into its hotsync cradle, wait for the status to change back to power on or power off and tap the next command.

SOURCE SCREEN

The second screen in the Projector Pilot program gives you control over which sources are projected. Tap on the type of source to switch the input of the projector. Tapping on the Blank On/Off button will change the projected image to either blue screen, black screen or logo screen depending on how it is set in the projector's menu.



On the video source selection, tapping the auto button will switch the source to the first available video signal, giving priority to the S-Video signal. If you have two video sources connected to the projector, you can switch between the RCA or S-video inputs by tapping on their respective buttons. If the projector has BNC inputs, they can be chosen if they are first turned on with the switch at the back of the projector. The BNC input configuration (RGB or R-YYB-Y) is set in the projector's menu. Please consult your Epson projector manual for detailed descriptions of the various input sources.

Note: If you tap on a source that isn't configured, no source change will take place. The projector will simply ignore the command.

AUDIO SCREEN

The audio screen gives you control over the sound coming from the projector. The controls on this screen are effective only if you are using the projector's internal speakers.



You can raise or lower the volume, treble or bass by tapping on the upper or lower arrows. You can also place the pen on the black rectangle on the slider, drag it to the position you want it to go, and then lift up the pen. Finally, you can tap above or below the black rectangle on the slider bar to move the rectangle in steps.

Note: If you are using an older model of Epson projector, you will see a screen that has volume and tone controls. The older models do not have the ability to adjust treble or bass. Projector Pilot automatically determines the model of the projector and the type of audio controls available when it starts up.

If you are adjusting the audio settings while the projector's menu is on, the projector will respond slower than normal and the Projector Pilot program will appear sluggish. This is also evident when commands are sent with the Palm removed from the hotsync cradle. If the Palm is in its cradle and communicating properly with the projector, there will be no performance issues as the Projector Pilot program will be receiving data and not have to wait for any responses.

Tapping on mute on or off will mute the projector. The volume slider will stay in its current setting when the projector is muted.

MISCELLANEOUS SCREEN

The fourth and final screen available in the Projector Pilot is the miscellaneous screen. Use this screen to turn on ceiling mode or rear projection mode. When you first enter this screen, the Projector Pilot program queries the status of both rear and ceiling modes. The current status of the two modes will be blacked out.



TROUBLESHOOTING

The Projector is not Responding or Reporting Disconnected

There are several reasons why the projector may not respond, or that the “Projector Status” line on the Projector Pilot screen displays “Disconnected”.

1. In order not to lose contact with the projector when you switch from PC1 to PC2 the Com port must be fixed to Com 1. The Projector Pilot sends the command to fix the Com port when the program is started. However, if the Com port is already changed to Com 2, the projector will not receive the command (nor will it accept any commands) and you will have to set it manually. Go to the projector’s Menu-Options and select Mouse/Com. This menu setting allows you to lock and unlock the Mouse/Com port. Select either 1 or 2 depending on the port you are using and this will eliminate the problem. Selecting (1-2) is the wrong setting. It tells the projector to automatically switch wireless control whenever the input source computer is switched. This is also the default selection on the projector.
2. The cable run may be too long. You will need to purchase a serial amplifier to boost the signal over long distances.
3. The projector is disconnected.
4. The Palm batteries are low.

TECHNICAL SUPPORT

For technical support, please visit our web site at www.willowdalesw.com. You will find FAQ's, online postings of known bugs, a bug reporting form, a suggestion forum and instructions on how to obtain additional technical support.

You can also send support requests directly to: support@willowdalesw.com. Please include your serial number in any support request.

Projector Pilot is helping to unleash the potential of the innovative and increasingly ubiquitous Palm Connected Organizer. You are encouraged to send us feedback about enhancements that you would like to see in future versions of Projector Pilot. Please visit our web site to post your comments in our user forum.